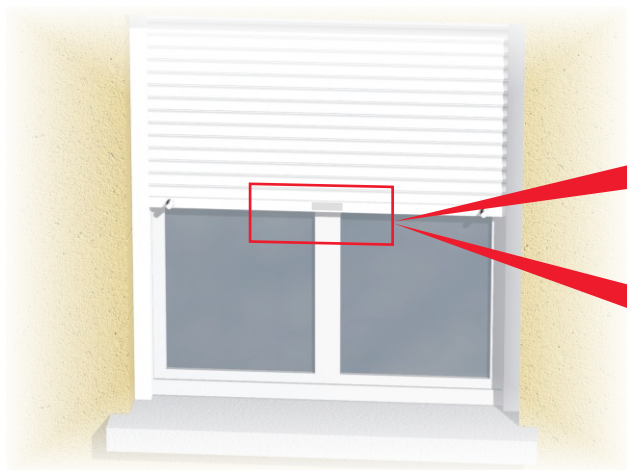
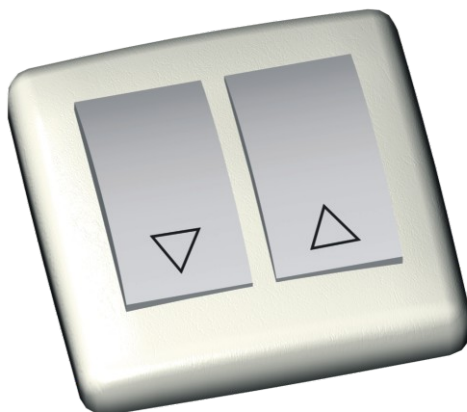


# Moteur Filaire 3F-F

Manoeuvre électrique

## Notice de réglage



volets roulants avec butées physiques

TBP

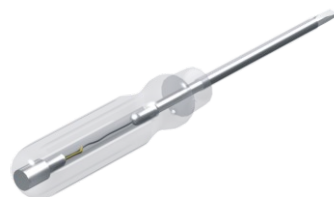
volets roulants avec butées virtuelles

TBV

### Outillage optionnel



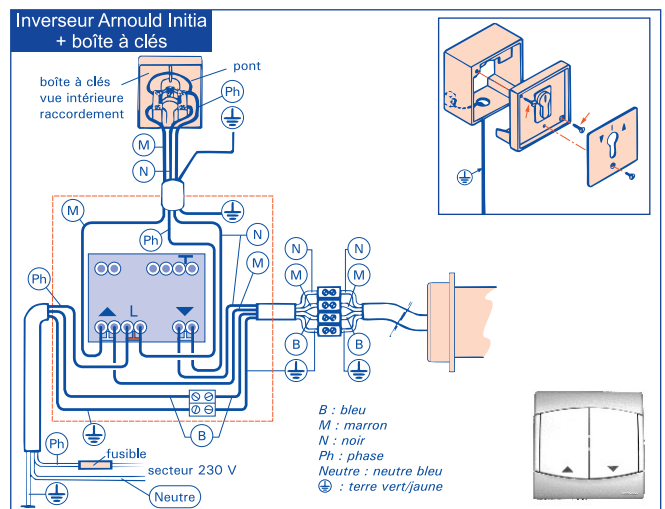
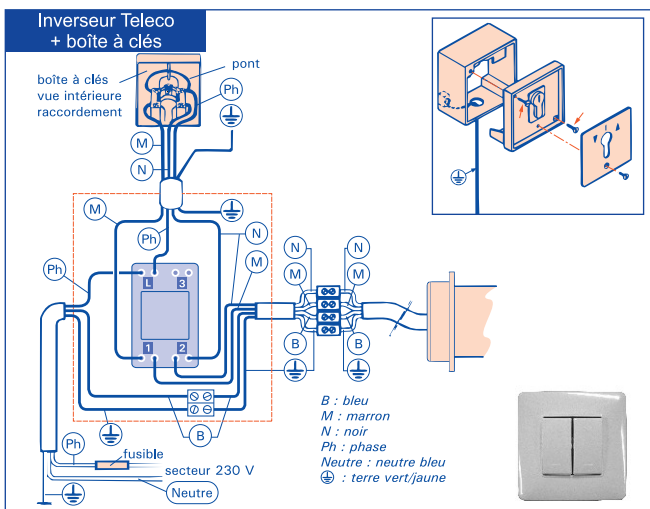
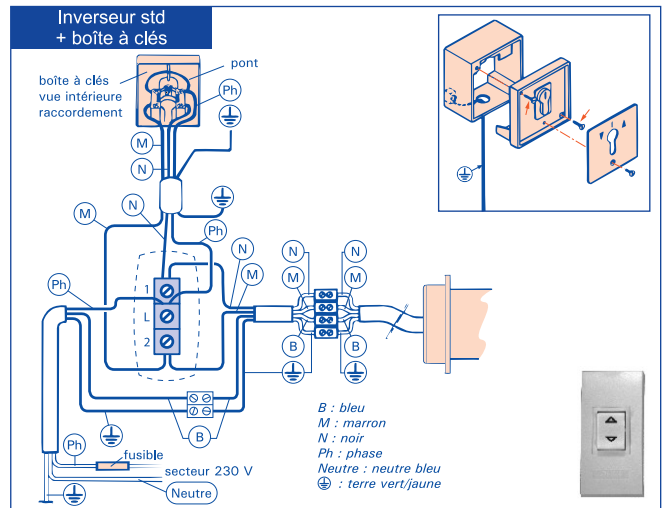
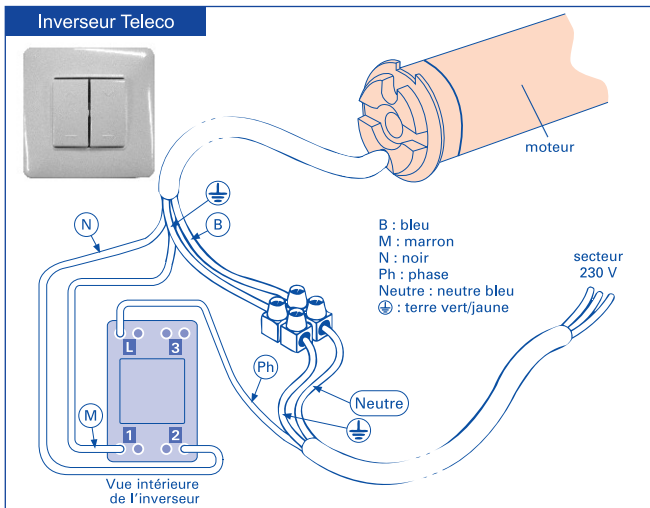
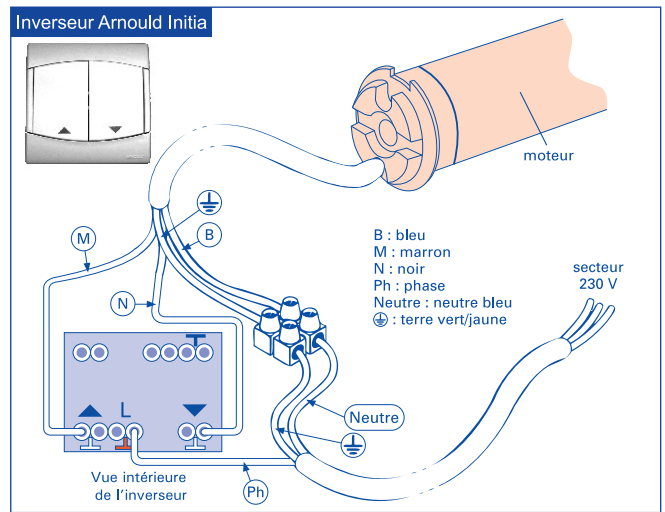
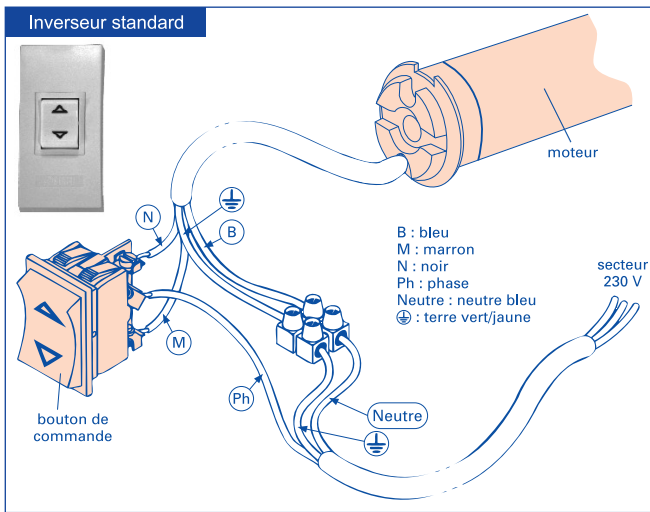
### Outillage nécessaire non fourni



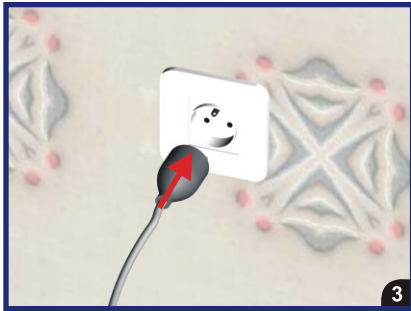
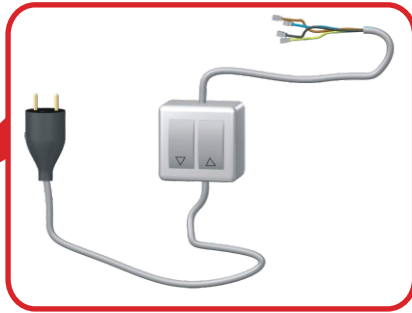
# Sommaire

Schémas de câblage.....	page 2
OPTIONNEL : Branchement de la commande de réglage.....	page 3
Vérification du sens de rotation.....	page 3
Modification du sens de rotation.....	page 3
TBP - Réglage des fins de courses pour volets avec butées physiques.....	page 4
TBV - Réglage des fins de courses pour volets avec butées virtuelles.....	page 5
Remise à zéro des programmations.....	page 6
Réinitialisation si dysfonctionnement grave.....	page 6

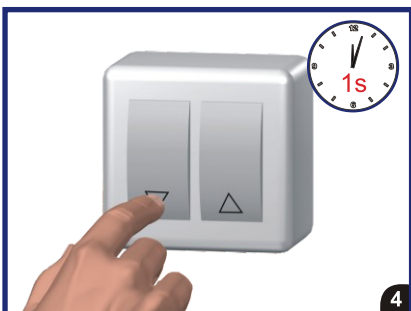
## Schémas de câblage



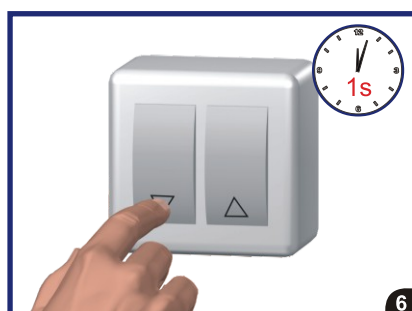
## OPTIONNEL : Branchement de la commande de réglage



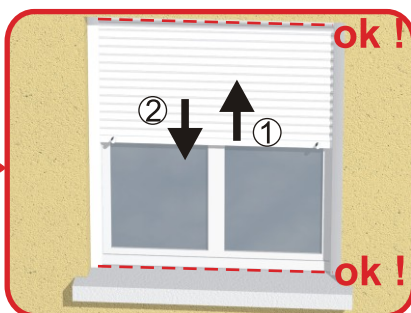
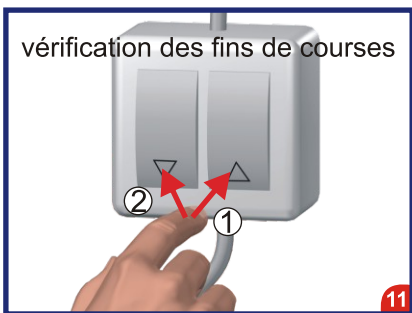
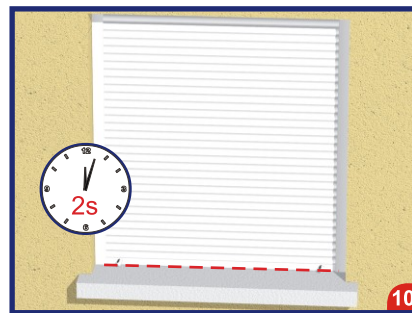
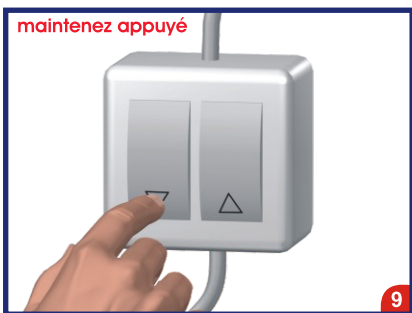
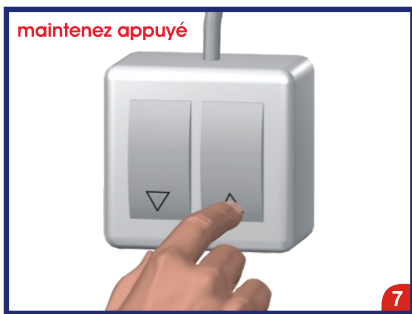
## Vérification du sens de rotation



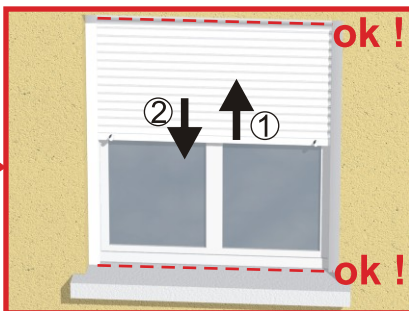
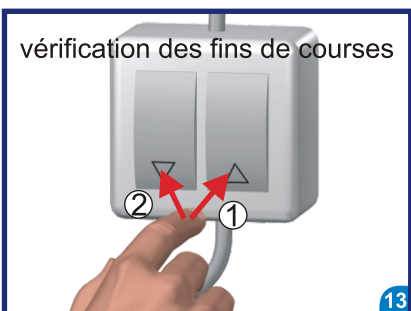
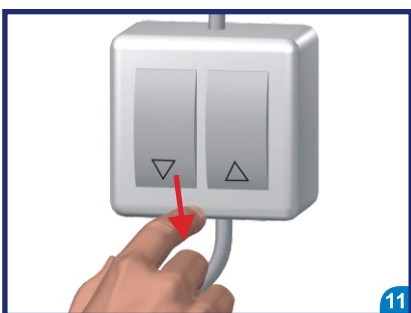
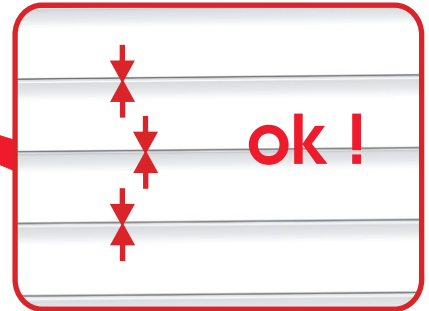
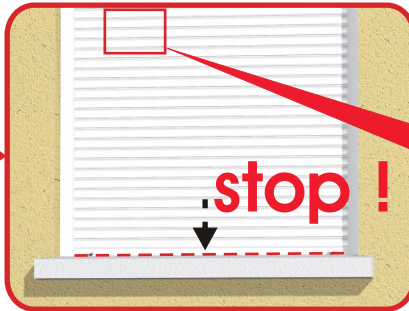
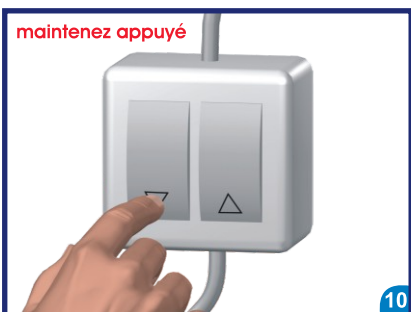
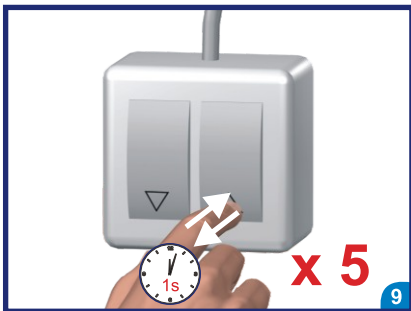
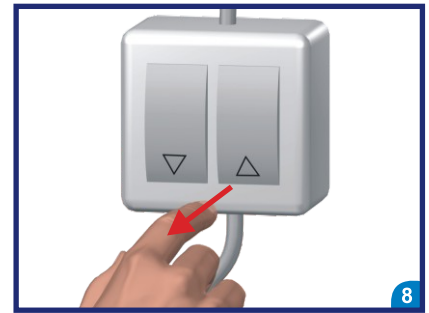
## Modification du sens de rotation



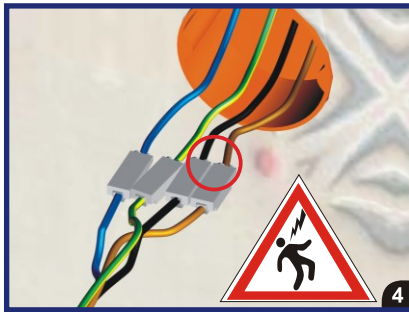
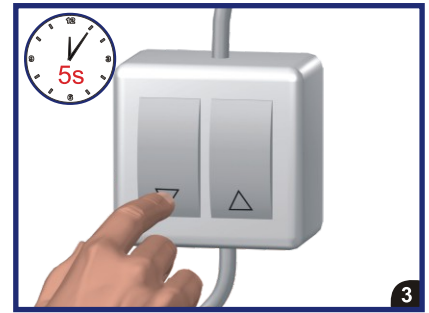
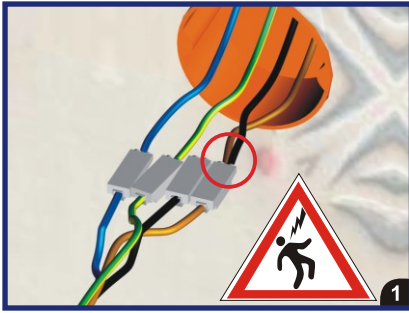
# TBP - Réglage des fins de courses pour volets avec butées physiques



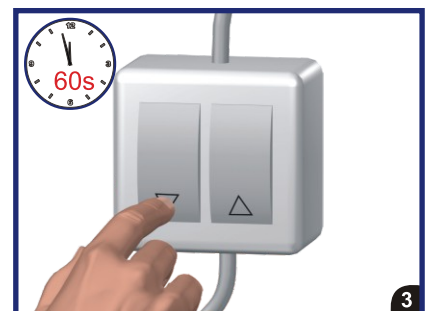
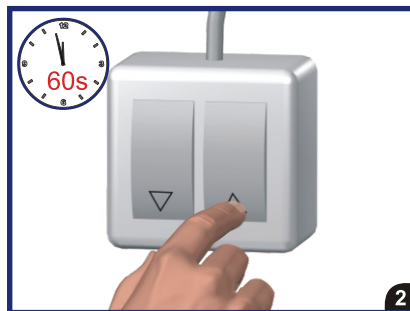
# TBV - Réglage des fins de courses pour volets avec butées virtuelles



## Remise à zéro des programmations



## Réinitialisation si dysfonctionnement grave



# Notes





1421 028

